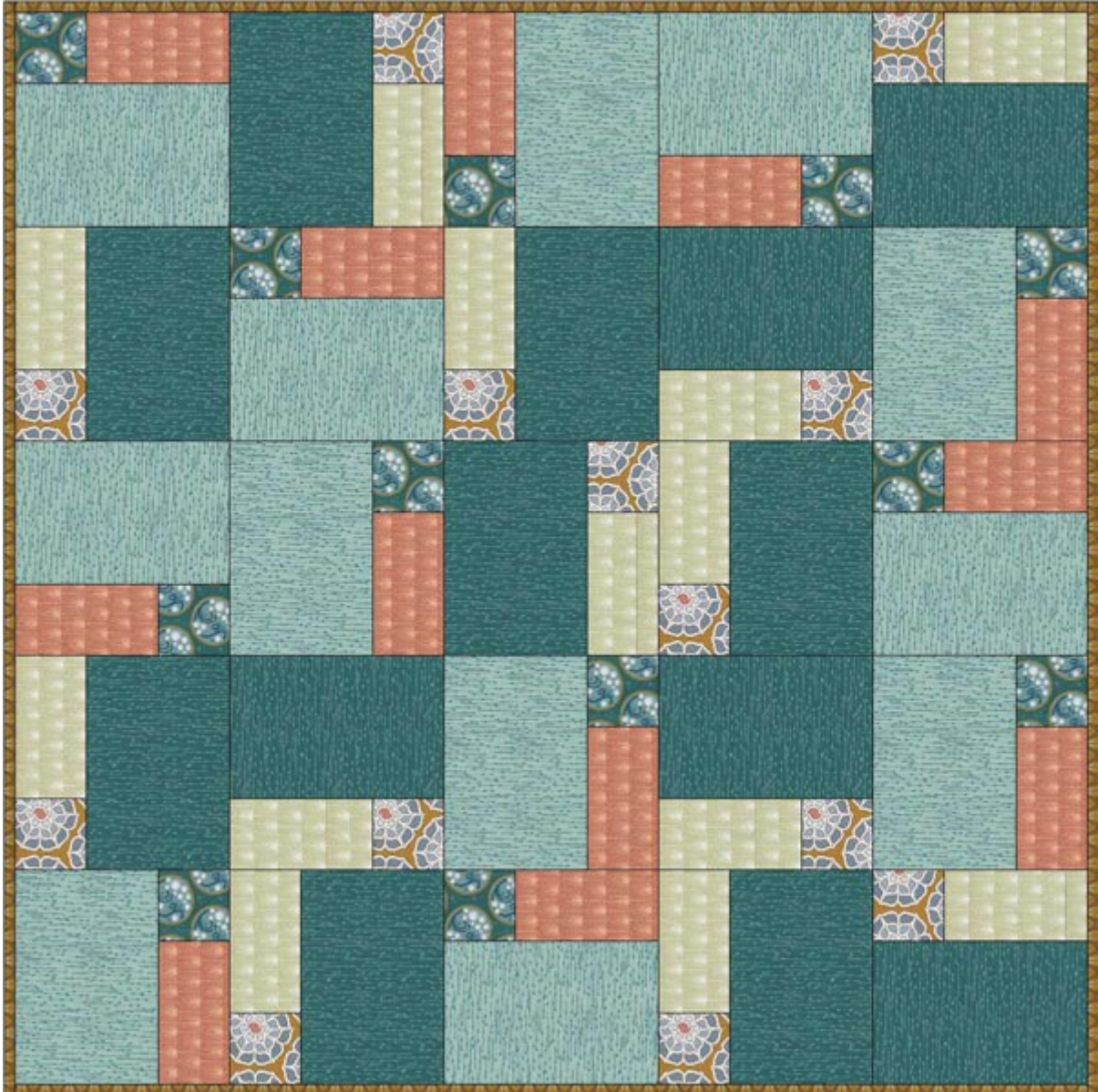
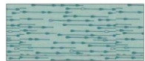


Cascade lap quilt (50" x 50")



Fabric requirements:



A. 39752-12 Drip mineral: 5/8 yd (22.5") - cut 12 rectangles 7.25" x 10.5"



B. 39748-4 Bubble bayou: 1/4 yd (9") - cut 12 squares 3.75" x 3.75"



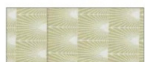
C. 39750-9 Splash clay: 3/8 yd (13.5") - cut 12 rectangles 3.75" x 7.25"



D. 39752-4 Drip bayou: 7/8 yd (31.5") - cut 13 rectangles 7.25" x 10.5"



E. 39747-1 Float silt: 1/4 yd (9") - cut 13 squares 3.75" x 3.75"



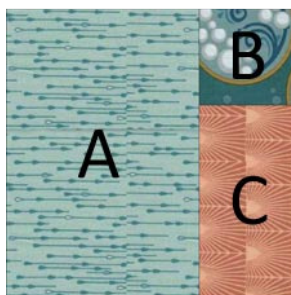
F. 39750-6 Splash spring: 3/8 yd (13.5") - cut 13 rectangles 3.75" x 7.25"



G. 39751-1 Glisten silt: 3/8 yd (13.5") - cut 4 strips width of fabric (wof) x 2.5"

Additional supplies required: Backing fabric, wadding, quilting and piecing thread

Block 1:



1. Sew B (3.75" x 3.75" square) to C (3.75" x 7.25" rectangle)
2. Sew B and C to long side of A (7.25" x 10.5" rectangle)
3. Press and square to 10.5"
4. Repeat to make 12 blocks

Block 2:



5. Sew E (3.75" x 3.75" square) to F (3.75" x 7.25" rectangle)
6. Sew E and F to long side of D (7.25" x 10.5" rectangle)
7. Press and square to 10.5"
8. Repeat to make 13 blocks

Quilt assembly:

9. Sew the blocks together in horizontal rows, referring to the quilt picture for block order and orientation.
10. Sew the horizontal rows together as shown in the picture to complete the quilt top.
11. Layer your backing, wadding and quilt top and baste, then quilt as desired.
11. Use the 2.5" x wof strips of fabric G to make the binding, bind using your preferred method, and voila, the quilt is complete! If you have any questions or queries please don't hesitate to contact us at Pelenna Patchworks!



5 Bevans Terrace, Pontrhyfen, Port Talbot SA12 9TR
Telephone: 01639 898444
Email: sales@pelennapatchworks.co.uk